

KOREA: BRIEF HISTORY AND CULTURE

Lucy Park
Executive Director, Sejong Cultural Society



KOREA

- Located between China and Japan
- Continuous cultural and geopolitical interactions with China and Japan
- Korean language is considered “language isolate”

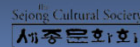


Korea is a peninsula located between China and Japan. Some consider the Korean language as one a “language isolate”, a natural language with no demonstrable genealogical relationship with other languages; others note possible links to Altaic, or Japanese.

Country Area & Population

	Area (km ²)	Population (million)	GDP* (trillion)
South Korea	99k	51	1.5
North Korea	120k	25	—
Japan	377k	126	4.8
China	9,596k	1,400	12.2
USA	9,833k	326	19.3

The World Factbook: US Central intelligence Agency (2017)
 *World Bank (2017)



GDP per capita, ranking (out of 230)

Qatar #1 (\$129,700),

USA #18,

Japan #41,

South Korea #45,

China #104,

North Korea #211,

Somalia #230 (\$400)

Korean Wave (Hallyu):

Korean Cultural Export since early 1990s

- Korean movies, TV dramas, and pop-music are very popular around the world; rapidly spreading beyond Asian countries
- Korea is among the world's top ten cultural exporters



Crash Landing on You



BTS (Bang Tan Sonyun dan)



Parasite

Click the pictures to watch music videos and excerpts from TV dramas.

The Korean Wave (Hallyu, 한류, 韓流) refers to the increased popularity of South Korean culture around the world since 1990s. The term was coined in China in mid-1999 by Beijing journalists surprised by the fast growing popularity of South Koreans and South Korean goods in China. South Korea is among the world's top ten cultural exporters and the Korean wave began with the export of Korean TV dramas such as “Autumn Fairy Tale”, “Winter Sonata”, “Dae Jang Geum” (Jewel in the Palace), and “Princess Hours” across East and Southeast Asia. The growing success of Korean dramas was soon matched by Korean movies, popular music, food and language. While popular throughout Asia, the Korean Wave's influence is most visible in China, Japan and Southeast Asia, spreading to the Middle East and Russia.

The Korean Wave is rapidly expanding beyond Asia through the internet and has a substantial presence in North, Central and South America, and is increasingly becoming popular in the United States and Canada. It is gathering positive interest in North Africa. Currently, the Korean wave is starting to hit Europe (including United Kingdom, France, Spain, Germany), New Zealand, and Australia.

Korean Movie “Oldboy” won Grand Prix at the 2004 Cannes Film Festival and high praise from Quentin Tarantino, who was the president of the jury. The film has been well received in the US with high rating at Rotten Tomatoes and Roger Ebert. In 2008 voters on CNN named It one of the ten best Asian films ever made.

Modern Korea

- One of the world's fastest growing economies
- World's 5th largest exporter



South Korea is a developed country and has had one of the world's fastest growing economies from the early 1960s. Korean GDP ranked No. 12 in the world. As of 2009, South Korea is the world's eighth largest exporter.

Well known Korean brands include Samsung, Hyundai, LG, and Kia motors.

Mobile Phones Global Market Share

- Samsung 23.5%
- Apple 15.9%
- Huawei 12.1%
- LG 3%



(Counterpoint: 2018 Q1)

Internet and WiFi Connectivity

- The first country to complete the conversion from dial-up to broadband by 2005.
- The fastest average internet connection in the world in 2017
 - South Korea: 28.67 Mbps (#1)
 - USA: 18.7 Mbps (#10)
 - Global average: 7.2 Mbps
- The cheapest
 - 1 Gbit/s connections or 1,000 Mbit/s at \$20 per month in Seoul

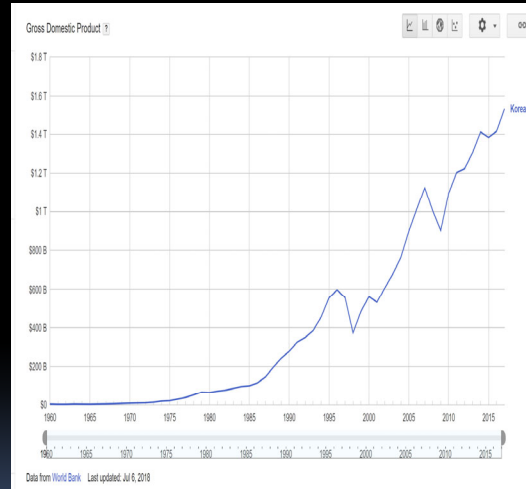
<https://www.usnews.com/news/best-countries/slideshows/10-countries-with-the-fastest-internet-speeds?onepage>

KOREA: Gross Domestic Product 1960- 2018

- Economic development plan began after military coup in 1961
- Export oriented industry
- Technologically advanced
- 2018 Korean GDP ranked No. 11 in the world.

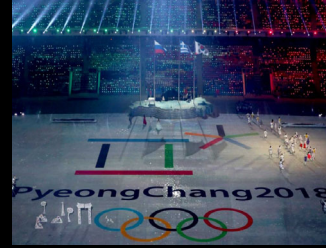


Korea in 1953 at the end of Korean war



GDP growth: Data from World Bank 2018

KOREA: now



- 11th largest economy
- Nominal GDP: \$1.53 trillion
- GDP (PPP): \$2.02 trillion

<https://www.investopedia.com/insights/worlds-top-economies/>

BRIEF HISTORY OF KOREA



Korean Peninsula

- Paleolithic period (ca. 50,000 BP – 8000 BCE)
 - Proto-Koreans were migrants from south-central Siberia during the bronze age.
- Neolithic life (ca. 8000 BCE to 1500 BCE)



Neolithic semi-subterranean pit dwellings



Neolithic sites in South Korea

Barnes, Gina Lee (1993). The Rise of Civilization in East Asia: The Archaeology of China, Korea and Japan. Thames and Hudson.

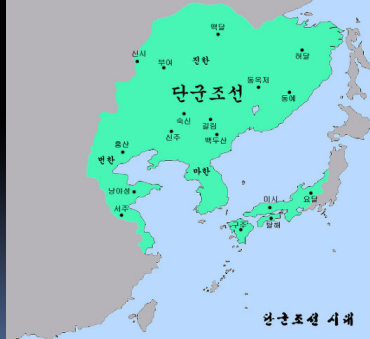
Five Thousand Years of Korean History

Country	Time
2333 B.C.	Go-Joseon
1 st century B.C.	Three kingdoms (Shilla, Baekje and Goguryeo)
668 – 935	Silla (south: 668-935) Balhae (north: 698-926)
935 - 1392	Goryeo Dynasty
1392 – 1910	Joseon Dynasty
1910 - 1945	Japanese rule
1948	Established Republic of Korea in South, Democratic Peoples Republic in the North
1950-1953	Korean war
1961	Military coup
1988	Seoul Olympics

The history of Korea dates back almost 5,000 years. The country started modernization and economic development in the late nineteenth century, a process blocked by Japanese colonial annexation in 1910. Rapid economic and industrial development began again in the 1960s.

Go-Joseon

- King Dan-gun established Go-Joseon in 2333 B.C.



Country	Time
2333 B.C.	Go-Joseon
1 st century B.C.	Three kingdoms (Shilla, Baekje and Goguryeo)
668 – 935 A.D.	Silla (south: 668-935) Balhae (north: 698-926)
935 - 1392	Goryeo Dynasty
1392 – 1910	Joseon Dynasty
1910 - 1945	Japanese rule
1948	Established Republic of Korea in South
1950-1953	Korean war
1961	Military coup
1998	Seoul Olympic Game

According to Korean mythology King Dan-gun was the founding father of Go-Joseon; his father was the son of a deity and his mother, a woman transformed from a bear. The Story of Dan-gun from the 13th century Remnants of the Three Kingdoms explains that a tiger and a bear prayed to be transformed into humans. The deity instructed them to eat only garlic while avoiding sunlight by staying in a cave for 40 days. Tiger could not stand it and left the cave before 40 days. The bear stayed in the cave for 40 days and became a woman, Woong-nyeo (in Korean it means bear woman) and married Hwan-woong, son of the deity. Woong-nyeo may have been a princess of a tribe worshipping bear, Hwan-woong, perhaps a prince of a strong tribe.

Three Kingdoms to Goryeo

- Buddhism became national religion.
- Arts and culture flourished during Silla Dynasty.

Country	Time
10 th century B.C.	Go-Joseon
1 st century B.C.	Three kingdoms (Silla, Baekje and Goguryeo)
668 – 935 A.D.	Silla (south: 668-935) Balhae (north: 698-926)
935 - 1392	Goryeo Dynasty



Go-Joseon was divided into three kingdoms, Goguryeo, Baekje, and Silla. Silla unified the peninsula by forming an alliance with Chinese Tang dynasty and attacking Goguryeo simultaneously. Descendants of Goguryeo established Balhae in the northern territory. Unified Silla prospered with splendid artistic and cultural achievements for nearly 300 years. Gyeongju historic area, capital of the Silla kingdom (57 BC – 935 AD), is a superb showcase of the kingdom's achievements in arts, science, architecture, and landscape design. The area was designated as UNESCO's World Cultural Heritage in 2000. Buddhism was introduced to Korea during the 4th century and later became a state religion from late three kingdoms to Goryeo dynasty.

Silk Road reached Korean peninsula



Joseon (1392-1910)



Country	Time
10 th century B.C.	Go-Joseon
1 st century B.C.	Three kingdoms (Silla, Baekje and Goguryeo)
668 – 935 A.D.	Silla (south: 668-935) Balhae (north: 698-926)
935 - 1392	Goryeo Dynasty
1392 – 1910	Joseon Dynasty

- Expanded territory boundary up to Yalu river in north.
- Confucianism was promoted by government.
- Korean alphabet was invented.
- Sijo became popular.

Yi Sung-gye overthrew Goryeo dynasty and established Joseon. He expanded territory to Yalu river. Current boundary between China and North Korea, Yalu river and Doo-man river, was established at this time. The fourth king, Sejong (1418-1450) brought many innovations to government, most famously Hangeul, the Korean phonetic alphabet.

Japanese Rule

- Japan annexed Korea by force in 1910.
- Japan in 1938 outlawed use of Korean language in an attempt to eradicate Korean national identity.
- Deep lament and resentment toward invaders prevailed in Korean literature and music, along with attempts to grapple with new, modern forms.

Country	Time
10 th centry B.C.	Go-Joseon
1 st centry B.C.	Three kingdoms (Silla, Baekje and Goguryeo)
668 – 935 A.D.	Silla (south: 668-935) Balhae (north: 698-926)
935 - 1392	Goryeo Dynasty
1392 – 1910	Joseon Dynasty
1910 - 1945	Japanese rule

Japan modernized its army in late 19th century and built a strong military power. In early 20th century Japan invaded Korea and northern China. In its effort to eradicate Korean culture and identity, Japan in 1938 banned the use of the Korean language in schools, forced Koreans to abandon Korean names and change them to Japanese names. While many made such changes, however reluctantly, others, like the poet, Buddhist monk and resistance leader Han Yong-un (1879-1945). Korean resistance movement groups fought the Japanese in Korea and northern China. Koreans in Shanghai, the US and elsewhere in exile sought to gain support to free Korea from Japanese rule, but in vain.

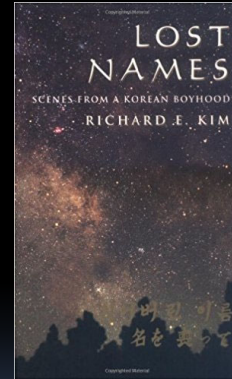
1919 March First Movement

- Inspired by Wilson's 1918 Versailles speech on self-determination of nations
- Surprise event coinciding with King Kojong's funeral
- Declaration of Independence, peaceful march



Assimilation Policies by Japanese Ruler

- Japan in 1938 outlawed use of Korean language in an attempt to eradicate Korean national identity.
- Koreans were forced to change names to Japanese names: both surnames and first names
- Lost Names by Richard Kim: Japanese teacher tells Kim's father, "I am sorry... Even the British wouldn't have thought of doing this sort of primitive thing in India... inflicting on you this humiliation...unthinkable for one Asian people to another Asian people, especially we Asians who should have a greater respect for our ancestors." (p 109)



Divided Peninsula

- In 1945 at Postdam conference US (Truman), USSR (Stalin) and UK (Churchil) decided to divide Korean peninsula at 38th parallel without consulting Koreans.



Country	Time
10 th century B.C.	Go-Joseon
1 st century B.C.	Three kingdoms (Shilla, Baekje and Goguryeo)
668 – 935 A.D.	Silla (south: 668-935) Balhae (north: 698-926)
935 - 1392	Goryeo Dynasty
1392 – 1910	Joseon Dynasty
1910 - 1945	Japanese rule
1948	Established Republic of Korea in South
1950-1953	Korean war
1961	Military coup
1988	Seoul Olympics

Surrender of Japan to the Allied Forces in August 1945 ended the Japanese occupation of Korea. Korean peninsula was divided at 38th parallel by Allied Forces (US, USSR and UK). Two competing provisional governments were formed: Republic of Korea (ROK, South Korea, also known as, Korea) in the south, backed by US, while the Democratic Peoples Republic Korea (DPRK, also known as North Korea) was established in the north under the supervision of the USSR with support also from communist China.



Korean War (1950 – 1953)

- North Korea invaded south by launching surprise attack on 6/25/50.
- United Nations forces led by US defended South.
- Armistice agreement was signed by UN, North Korea, and China in 1953.
- Many Koreans lost or separated from family members in both south and north.

Country	Time
10 th century B.C.	Go-Joseon
1 st century B.C.	Three kingdoms (Shilla, Baekje and Goguryeo)
668 – 935 A.D.	Shilla (south: 668-935) Balhae (north: 698-926)
935 - 1392	Goryeo Dynasty
1392 – 1910	Joseon Dynasty
1910 - 1945	Japanese rule
1948	Established Republic of Korea in South
1950-1953	Korean war
1961	Military coup
1988	Seoul Olympics

Armistice agreement was signed by UN, North Korea, and China in 1953 dividing Korea North and South at the 38th parallel. This was one of the bloodiest wars in human history. Total estimated military casualties were about 1.5 million (including 37,000 US soldiers); civilian casualties were about 2.5 million. Korean literature and music at this time reflect feelings of deep sorrow and hopelessness.

Korean War (June 25, 1950 – July 27, 1953)

- Not a simple civil war.
- “Proxy War”: two superpowers (US & Soviet Union) fought a “limited war” in a third country.
- China emerged as a significant military power.
- This is the first war in which the UN participated.
- Support base was in Japan, which helped rapid industrial expansion and economic growth of Japan.

<http://www.history.army.mil/reference/Korea/kw-remem.htm>
<http://korean-war.commemoration.gov.au/cold-war-crisis-in-korea/>
<https://www.britannica.com/event/Korean-War>
<https://www.quora.com/What-was-the-significance-of-the-Korean-War>



Sejong Cultural Society
세종문화회관

"The aftermath of the Korean War set the tone for Cold War tension between the superpowers. The Korean War was important in the development of the Cold War, as it showed that the two superpowers, United States and Soviet Union, could fight a "limited war" in a third country. The "limited war" or "proxy war" strategy was a feature of conflicts such as the Vietnam War and the Soviet War in Afghanistan, as well as Angola, Greece, and wars in the Middle East."

"It will take 100 years for South Korea to recover from the war." - Gen. McArthur

The fact that the Chinese openly, and the Russians covertly, fought on the side of the North Koreans also furthered the idea that this was a struggle not against a single nation but against an ideological threat. The Communists were a single bloc to be faced again and again around the world. (This was not, in fact, the case as the Soviets and Chinese very quickly had a falling out, as did the Chinese and the Vietnamese).

Korea also influenced the US's view of the United Nations. For the first two years of the war, the UN was a formidable fighting force that actually pushed the North Koreans off the peninsula before China intervened on their behalf. But the final year of the war was spent trading shots and grabbing small parcels of land while the UN attempted to negotiate a peace deal. In the future (such as Vietnam and beyond), the US would not seek the UN as an ally as it often incurred too many "handcuffs." (The fact that the Soviets also would not make the same mistake of not being present for a vote on UN wars would also prevent this alliance from happening.)

Finally, had the Korean War not occurred, South Korea would not be one of the 10 fastest growing economies in the world or one of the most technologically advanced nations today. At the time of the war, South Korea was a third world, agrarian economy with no real prospects for development. There was no reason for the US or other nations to invest in it. The North Koreans were a industrial powerhouse that had the potential to dominate the manufacturing world. After the war, the US rebuilt South Korea and remained a dedicated partner in every fashion. Helping the South Koreans to surpass the US in terms of technology and economic growth.

KBS TV Live: Looking for Dispersed Family

- Started as one-day special program on 6/30/1983
- Continued non-stop until 11/14/1983 (453 h 24 m)
- 53,536 families appeared
- 10,189 families found lost ones



The pain of dispersed family is obvious even after 30 years after the ceasefire. The KBS (Korean Broadcasting Service) planned a live TV program in 1983 for one evening. Due to overwhelming response, they had to continue for 453 hours and 24 minutes. People looking for lost families kept coming to the KBS studio, set up tents while waiting to get inside the studio. The entire nation felt the deep pain and sorrow of these families and cried with them.

Modern Korea

- Economic development plan began after military coup in 1961
- Technologically advanced
- 2017 Korean GDP ranked No. 11 in the world.
- Democracy established since 1998

Country	Time
10 th century B.C.	Go-Joseon
1 st century B.C.	Three kingdoms (Shilla, Baekje and Goguryeo)
668 – 935 A.D.	Shilla (south: 668-935) Balhae (north: 698-926)
935 - 1392	Goryeo Dynasty
1392 – 1910	Joseon Dynasty
1910 - 1945	Japanese rule
1948	Established Republic of Korea in South
1950-1953	Korean war
1961	Military coup
1988	Seoul Olympics

Korea (South Korea) is a developed country and it has one of the world's fastest growing economies from the early 1960s to the late 1990s. Korean GDP ranked No. 12 in the world. Koreans call this rapid transformation the “Miracle on the Han River.” The growth surge was achieved by concentrating on labor-intensive manufactured exports. As of 2009, South Korea is the world's eighth largest exporter.

MAJOR INVENTIONS BY KOREANS



Korean Alphabet: Hangeul (한글)

- King Sejong the Great invented Korean alphabet in 1443.
- Alphabet organizes written language into syllabic units.
- 14 consonants & 10 vowels
- Hangeul is a scientific system, invented following the shapes of vocal organs as they make sounds.
- *"A wise man can acquaint himself with them before the morning is over; a stupid man can learn them in the space of ten days".*



Sejong the Great, (1397-1450)

From <http://library.thinkquest.org/20746/non/info/index.html>



Hangeul is the only alphabet in the whole world invented by one person. It is a purely phonetic alphabet with 10 vowels and 14 constants.

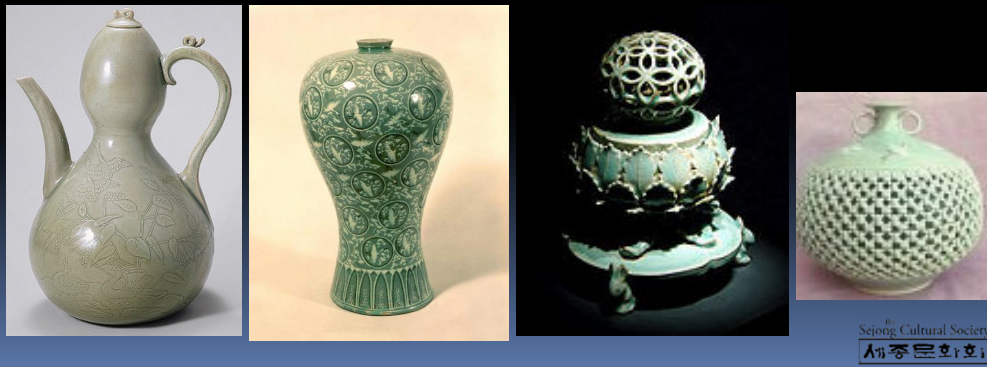
Koreans used Chinese characters before the invention of Korean alphabet. The majority of Koreans were effectively illiterate before the invention of Hangeul.

In explaining the need for the new script, King Sejong explained that the Korean language was different from Chinese; using Chinese characters to write was so difficult for the common people that only privileged aristocrats, usually male, could read and write. Hangeul was designed so that even a commoner could learn to read and write.

From <http://library.thinkquest.org/20746/non/info/index.html>

Korean Ceramics

- **Celadon** with pale jade green glaze and inlaid pattern was invented in 10th century during Koryo dynasty.
- Inlay technique was invented which produce optical effect of image floating above the surface of the pots



Elegant jade-green celadon became a signature pottery of Goryeo dynasty perfecting the technique in mid 12th century. The inlaying technique of incising patterns on the surface of the vessel was a unique invention of Goryeo craftsman. In the entire world at the time, only China and Korea possessed the technology necessary to produce the celadon ceramic ware.

An innovative Korean contribution to world ceramics was the use of black and white inlays placed beneath the glaze to depict images such as clouds, cranes, and flower, often accompanied by a crackle pattern. Observation yields an optical effect of the image floating above the surface of the pot due to the increased reflection and local brightening from the internal surfaces of the cracks. Poets and others have described flights and floating images during banquets.

UNESCO's Memory of the World: Movable Metal Type for Printing

- Invented in 13th century (before 1232) during Goryeo dynasty
- The world oldest extant movable metal print book is the Jikji (Korean Buddhist document), printed in Korea in 1377.
- 78 years prior to Gutenberg's metal type printing



Baegun hwasang chorok buljo jikji simche yojeol (Jikji) contains the essentials of Zen Buddhism compiled by priest Baegun in late Goryeo period. The book was printed in two volumes. The first volume is still missing and the second volume is kept in the Bibliothèque Nationale of France.

UNESCO Memory of the World (http://portal.unesco.org/ci/en/ev.php-URL_ID=22953&URL_DO=DO_TOPIC&URL_SECTION=201.html)

UNESCO's Memory of the World: Printing Woodblocks of the Tripitaka Koreana

- Woodblocks for printing Tripitaka (Buddhist scriptures)
- 81,258 pieces of woodblocks
- Took 16 years to complete the project (1236-1251)
- Woodblocks were treated by a special process for long-term preservation



The Temple of Haeinsa, on Mount Kaya, is home to the *Tripitaka Koreana*, the most complete collection of Buddhist texts, engraved on 80,000 woodblocks between 1237 and 1248. The buildings of Janggyeong Pajeon, which date from the 15th century, were constructed to house the woodblocks, which are also revered as exceptional works of art. As the oldest depository of the *Tripitaka*, they reveal an astonishing mastery of the invention and implementation of the conservation techniques used to preserve these woodblocks. This project was an expression of pious devotion of king and its people to Buddha.

-Left: woodblock

-Center: aerial view of Hae-in-sa Temple

-Right: inside of depositories

UNESCO World Heritage (<http://whc.unesco.org/en/list/737>)

Ingenious Inventions: Geobukseon (Turtle –Shaped Warship)



- The world first ironclad warship, Geobukseon (Turtle-shaped Warship), was built by General Yi Sun-shin in 1592 during the Japanese invasion.
- The ships had armored and spiked decks and cannons and were designed to be highly maneuverable .

Recognized as a breakthrough in military technology, Geobukseon replicas are on exhibit in a number of national museums, including the War Memorial of Korea, the War Memorial Museum in the U.S., the National Maritime Museum in England and historical museums in China, Germany and other countries.

UNESCO's Memory of the World: Bulguksa and Seok-gu-ram

- Bulguksa,
 - Constructed in 751 AD during Shilla kingdom
 - Main temple, gates, stone pagodas, bridges are all architectural masterpieces
- Seokguram Grotto
 - Granite sanctuary for stone Buddha
 - Wearing a serene smile of benevolence



Sejong Cultural Society
세종문화회

Established in the 8th century on the slopes of Mount T'oham, the Seokguram Grotto contains a monumental statue of the Buddha looking at the sea in the *bhumisparsha mudra* position. With the surrounding portrayals of gods, Bodhisattvas and disciples, all realistically and delicately sculpted in high and low relief, it is considered a masterpiece of Buddhist art in the Far East. The Temple of Bulguksa (built in 774) and the Seokguram Grotto form a religious architectural complex of exceptional significance. *UNESCO World Heritage* (<http://whc.unesco.org/en/list/736>)

UNESCO's World Cultural Heritages



Seokguram
Grotto and
Bulguksa
Temple



Tripitaka
Koreana
Woodblocks
Depository



Changdeok-
gung Palace



Gyeongju
Historic Areas



Jongmyo Shrine
of Joseon Royal
Ancestors



Dolmen Sites
in Ganghwa,
Hwasun, &
Gochang



Six historic sites in Korea have been accepted in the UNESCO's World Cultural Heritage listing. To be included on the World Heritage List, sites must possess outstanding universal value and meet at least one out of ten selection criteria.

Selection criteria:

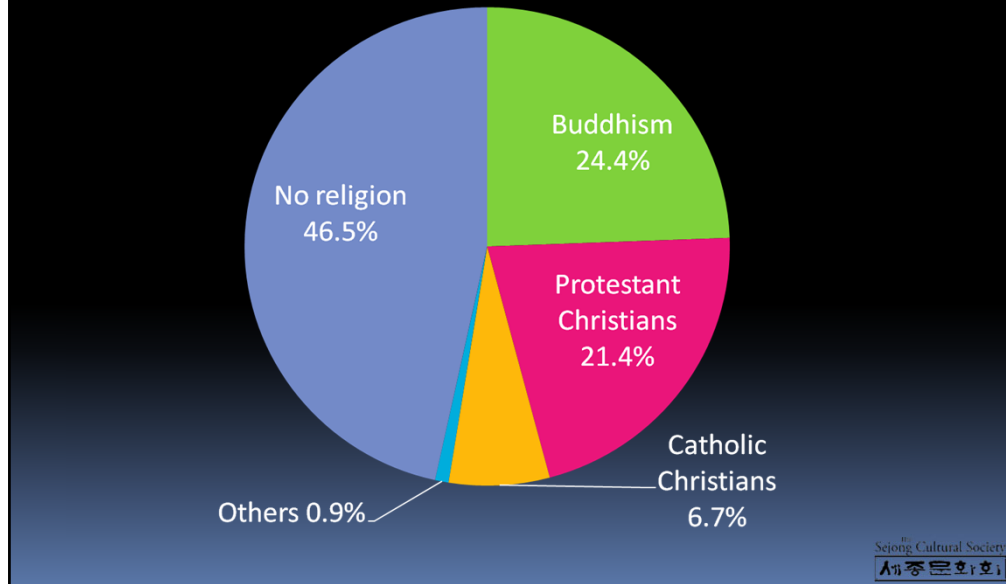
1. to represent a masterpiece of human creative genius;
2. to exhibit an important interchange of human values, over a span of time or within a cultural area of the world, on developments in architecture or technology, monumental arts, town-planning or landscape design;
3. to bear a unique or at least exceptional testimony to a cultural tradition or 4. to a civilization which is living or which has disappeared;
5. to be an outstanding example of a type of building, architectural or technological ensemble or landscape which illustrates (a) significant stage(s) in human history;
6. to be an outstanding example of a traditional human settlement, land-use, or sea-use which is representative of a culture (or cultures), or human interaction with the environment especially when it has become vulnerable under the impact of irreversible change;
7. to be directly or tangibly associated with events or living traditions, with ideas, or with beliefs, with artistic and literary works of outstanding universal significance. (The Committee considers that this criterion should preferably be used in conjunction with other criteria);
8. to contain superlative natural phenomena or areas of exceptional natural beauty and aesthetic importance;
9. to be outstanding examples representing major stages of earth's history, including the record of life, significant on-going geological processes in the development of landforms, or significant geomorphic or physiographic features;
10. to be outstanding examples representing significant on-going ecological and biological processes in the evolution and development of terrestrial, fresh water, coastal and marine ecosystems and communities of plants and animals;
11. to contain the most important and significant natural habitats for in-situ conservation of biological diversity, including those containing threatened species of outstanding universal value from the point of view of science or conservation.

The protection, management, authenticity and integrity of properties are also important considerations.

RELIGIONS OF KOREA



Religions of Korean People (2014 Gallup Report)



Korea is one of few countries where Buddhism and Christianity coexist with almost equal strength.

Worldwide distribution of religion: Christianity (catholics + protestants + others) 33%, Buddhism 6%, Islam 21%, Hinduism 14%, no religion 16% (in 2005 from www.adherents.com)

Korean Shamanism

- Shamanism has deep roots in folk beliefs.
- Related to the ancient communal worship rites offered to the gods of heaven.
- Participants seek to resolve human problems through a meeting of humans and the spirits mediated by the shaman



Shaman is about to perform a ritual. The shaman wears a colorful costume, speaks in a trance as a spiritual oracle, and sings and dances to music.

Sejong Cultural Society
세종문화회

Three elements are seen as essential to a “goot” (Korean shamanistic ritual): the spirits as the object of folk beliefs, the believers praying to those spirits, and the shaman mediating between the spirits and the believers.

Korean Buddhism

- Introduced to Korea during three kingdom era (around 372 A.D.)
- Became state religion in three kingdoms and Koryo dynasty
- Deep influence in every aspect of Korean life, culture, and arts
- Currently about 24% of population is Buddhist.
- Buddha's birthday is national holiday in Korea.



Sejong Cultural Society
세종문화회

Buddhism is a philosophy and religion, brought to Korea almost 1800 years ago. The principles of Buddhist teaching are deeply rooted in the way of life among Koreans regardless of their religion.

Many national treasures in art and architecture are Buddhism related, such as, Buddhist temple buildings or statues of Buddha.

Korean Confucianism

- Joseon dynasty promoted Confucian philosophies as national philosophy
- Complex system, selectively imported from China, of moral, social, political, philosophical, and quasi-religious thought.
- Became an indispensable component of the Korean moral system, way of life, and laws



Memorial rite to the kings of the Joseon Dynasty is performed at Jong-myoo Shrine



Joseon dynasty adopted Confucianism as its ruling ideology. Important Korean Confucian ceremonies are “coming of age at age 15 years”, marriage, death, and the anniversary of an ancestor’s death. Among these, funerals had the greatest effect on people’s lives. The funeral was a way of expressing one’s innermost feelings, and its conduct and atmosphere depended on the degree of intimacy or formality in the relationship between the living and the deceased. The Joseon promoted a revised form of Confucianism, called Neo-Confucianism, that had also been developed in China. In the 18th and 19th centuries, scholars developed and promoted the emergence of Silhak, or Practical Learning, which some see as an early step toward modern social and scientific practices.

Korean Christianity

- Catholicism was imported into Korea by a Korean scholar, Yi Seung-hun, who was baptized while visiting China.
 - Thousands of Catholics were executed during government persecution in the late Joseon dynasty.
 - 103 martyrs were canonized in 1984.
- Protestant missionaries came to Korea during Japanese rule in the early 20th century.
 - Dedicated to higher education and health care
- Catholics and Protestant Christians are more populous in urban areas and often have higher education levels.



Korea is the only country where Catholicism was brought in by a native missionary, Kim Dae-Gun, who went to a seminary in Macao. Rev. Kim returned to Korea as an ordained priest and was executed during persecution along with thousands of other fellow Catholics. The monument for martyrs is at the site of execution, Jul-Doo-San (meaning “mountain of beheading”).

Protestant evangelists came to Korean during the Japanese colonial occupation. They operated high schools, colleges, and hospitals and gained strong influence among better educated young people.

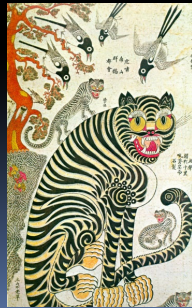
Currently, Korean missionaries, the world’s second largest group after Americans, are working in more than 150 countries.

KOREAN ARTS, FOOD, DRESS, & MUSIC



Traditional Arts: Painting

- Typically use few color, leaving background blank.
- Often combined with poem.
- Painters signed their artistic name and signature stamps.



Most paintings' background is left blank, allowing space for the viewer's imagination. Signature of painter and seal in red ink are part of the painting. Often painters use multiple seals and seal engraving is an art itself. Calligraphy is an important part of the Korean painting.

Korean Dance and Music

- Court dance and music



- Folk dance and music



Sejong Cultural Society
세종문화회

Click the title "Korean Dance and Music" to watch collage of Korean Dance.

Please click the pictures to watch video clips of Korean dance performances.

Court dancers often accompanied by an ensemble of Korean instruments. Some are slow and elegant (upper left), while others may start slow but tempo accelerates toward ending. Upper right is Korean fan dance.

Folk dance and music are frequently played by farmers, after harvest or at the field to cheer up the farmers at work. Percussion instruments are important parts of folk music. Farmers dance (bottom left) shows performers wearing hats with long tapes spinning. The performers spin the tapes by rotating their heads while playing small hand-drums and gongs. Gang-gang-suwol-rae (bottom right) was performed by young women under the bright full-moon festival at the first harvest known as Chu-seok (equivalent to Thanksgiving day in US). Click this picture and watch "Three-drum dance".

Korean Dress



Upper middle: children's dress

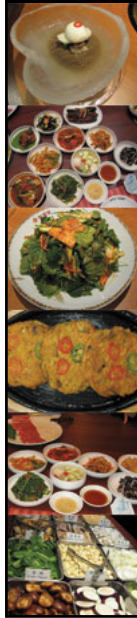
Right: elegant Korean dress for upper class woman

Bottom right: young boy of upper class

Bottom middle: commoner man and woman

Left: dress of the Queen

Korean Food



- Cooked rice, main dish, and side dishes
 - 3-12 side dishes
- Kimchi
 - fermented pickled vegetable with or without hot pepper, hundreds of variations
- Common elements of cooking
 - soy sauce
 - soy-bean paste (djon-jang similar to miso)
 - hot-pepper paste (go-chu-jang)
 - sesame oil
 - Lots of vegetables



More side dishes were served for more affluent people, while less were served for poor people.

Kimchi is fermented vegetables. Typical kimchi is made of Korean cabbage with hot pepper. Numerous variations of kimchi exist such as kimchi made with cucumber, radish, turnip, or green onions. Some kimchi is prepared without hot-pepper.

Pictures on left shows many side dishes; picture on right is Bi-bim-bap, rice with several vegetable and beef toppings served with hot-pepper paste and sesame oil.